

CORPORATE ROAD NORTH AND WALGREENS DRIVE

0353-508

83

A PORTION OF PALM BEACH PARK OF COMMERCE, A P.I.P.D.
 LYING IN SECTIONS 17 AND 18, TOWNSHIP 41 SOUTH, RANGE 41 EAST,
 PUBLIC RECORDS OF PALM BEACH COUNTY, FLORIDA.

SHEET 2 OF 3

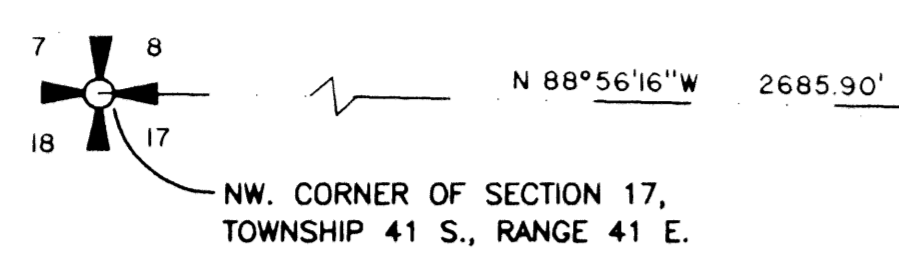
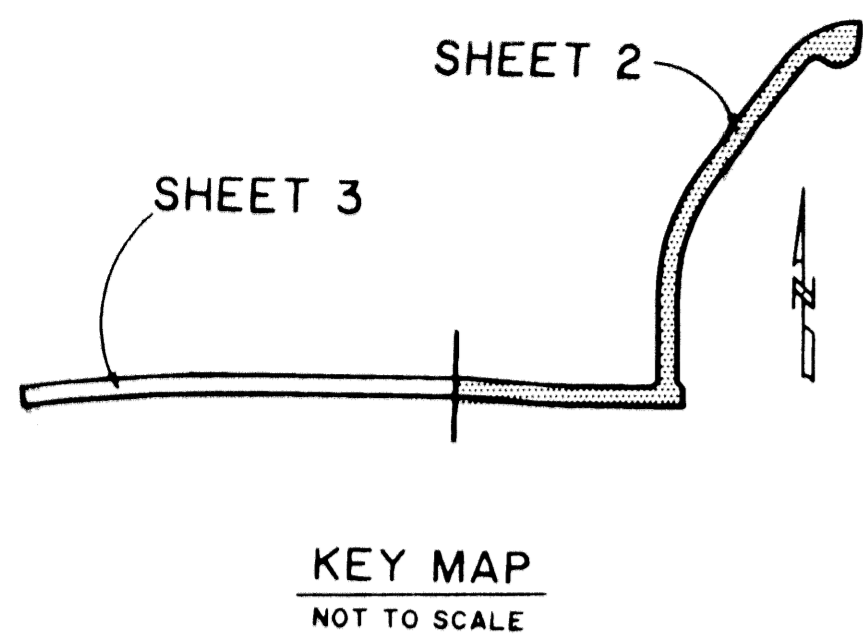
P.O.B. SECTION 17,
 TOWNSHIP 41 S., RANGE 41 E.
 FND P.B.C. BRASS DISK IN C.M.
 # 938280.4030
 E= 898625.1870

STATE OF FLORIDA SS
 COUNTY OF PALM BEACH
 THIS PLAT WAS FILED FOR RECORD AT _____
 M. THIS _____ DAY OF _____ 2001
 AND DULY RECORDED IN PLAT BOOK NO. _____
 ON PAGE _____
 DOROTHY H. WILKEN,
 CLERK OF THE CIRCUIT COURT
 BY _____ D.C.

N= 938244.6190
 E= 898652.7090
 FND P.B.C. BRASS DISK
 IN CONCRETE MONUMENT
 STAMPED FARM

P.O.B.
 N= 938166.8021
 E= 896660.6870
 FND. 4"x4" C.M./DISK
 P.R.M. # 5019

COORDINATE NOTE:
 STATE PLANE COORDINATES SHOWN ARE GRID DATUM, NAD 83 1990
 ADJUSTMENT, FLORIDA EAST ZONE, COORDINATE SYSTEM 1983 STATE
 PLANE, TRANSVERSE MERCATOR PROJECTION
 LINEAR UNIT = US SURVEY FEET
 ALL DISTANCES ARE GROUND
 SCALE FACTOR = 1.000005736
 GROUND DISTANCE X SCALE FACTOR = GRID DISTANCE
 BEARINGS AS SHOWN HERON ARE GRID DATUM, NAD 83 1990
 ADJUSTMENT, FLORIDA EAST ZONE.



WETLAND TRACT 16
 (O.R.B. 6297, PAGES 1247-1251)
 NORTHERN PALM BEACH COUNTY
 WATER CONTROL DISTRICT

WETLAND TRACT C-8
 (O.R.B. 7073, PAGES 210-218)
 NORTHERN PALM BEACH COUNTY
 WATER CONTROL DISTRICT

WETLAND TRACT 16
 (O.R.B. 6297, PAGES 1247-1251)
 NORTHERN PALM BEACH COUNTY
 WATER CONTROL DISTRICT

WETLAND TRACT C-II
 (O.R.B. 10574, PAGES 1326-1329)
 REJECTED BY NORTHERN PALM BEACH
 COUNTY IMPROVEMENT DISTRICT
 (O.R.B. 10764, PAGES 353-356)

N=936674.1536
 E=895111.4563

N=936681.0982
 E=894991.3129

R=1740.00'
 $\Delta=03^{\circ}57'49''$
 L=120.37'

R=1700.00'
 $\Delta=03^{\circ}57'49''$
 L=117.60' C=117.58'
 CH.B.=S 86°41'31\"/>

N=936653.6993
 E=895332.3697

N=936647.0474
 E=895448.1559

N 45°38'35\"/>

N=936594.4939
 E=895104.0806

WETLAND TRACT 15
 (O.R.B. 6297, PAGE 1256)
 NORTHERN PALM BEACH COUNTY
 WATER CONTROL DISTRICT

R=1700.00'
 $\Delta=04^{\circ}00'14''$
 L=118.80' C=118.77'
 CH.B.=S 86°42'43\"/>

N=936567.0671
 E=895446.3603

NORTH 1/4 CORNER
 OF SECTION 17/41/41
 FND #5 IRON ROD & CAP
 MARKED LBFH #959

N= 938302.1770
 E= 896313.1450
 FND P.B.C. BRASS DISK
 IN CONCRETE MONUMENT
 STAMPED PAST

N= 935686.1330
 E= 892643.7170
 FND P.B.C. BRASS DISK
 IN CONCRETE MONUMENT
 STAMPED POWER

N=937554.0887
 E=896006.8588

N=937505.7548
 E=896070.6076

N=937973.1712
 E=896424.9997

N=938002.4119
 E=896450.4529

N=938030.9081
 E=896651.0985

N= 938095.2742
 E= 896659.3427
 FND. 4"x4" C.M./DISK
 P.R.M. # 4169

P.O.B.
 N=938166.8021
 E=896660.6870
 FND. 4"x4" C.M./DISK
 P.R.M. # 5019

TEMPORARY IRRIGATION
 EASEMENT
 (O.R.B. 9354, PAGE 1737)
 ABANDONED BY
 O.R.B. 12062, PAGE 1821

TEMPORARY 10' U.E.
 (O.R.B. 9354, PAGE 1737)
 ABANDONED BY
 O.R.B. 12062, PAGE 1821

TEMPORARY 10' U.E.
 (O.R.B. 9354, PAGE 1737)
 ABANDONED BY
 O.R.B. 12062, PAGE 1821

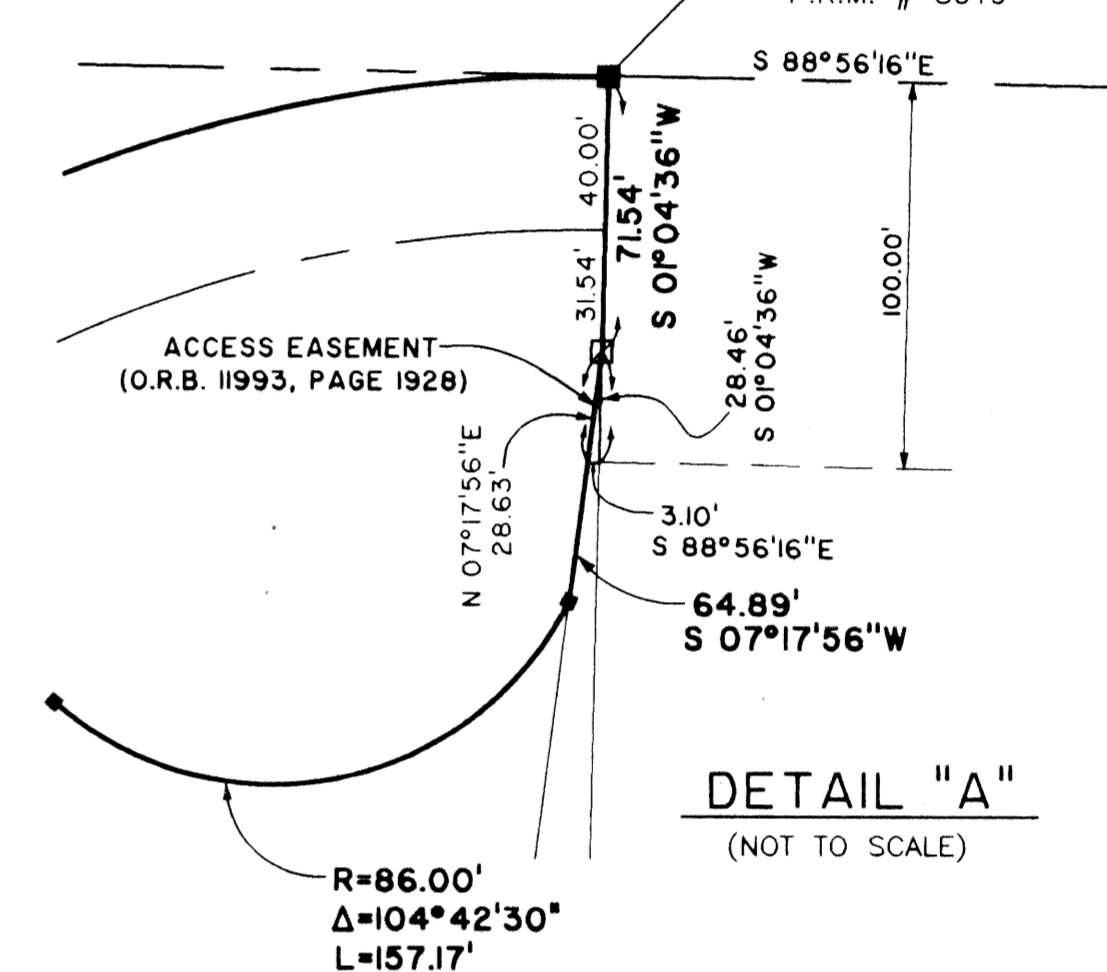
TEMPORARY 10' U.E.
 (O.R.B. 9354, PAGE 1737)
 ABANDONED BY
 O.R.B. 12062, PAGE 1821

TEMPORARY 10' U.E.
 (O.R.B. 9354, PAGE 1737)
 ABANDONED BY
 O.R.B. 12062, PAGE 1821

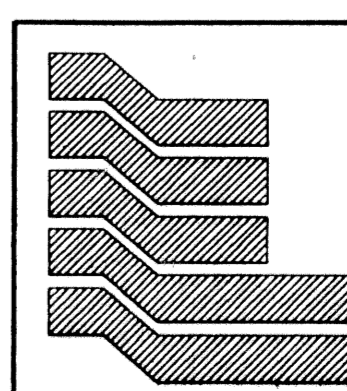
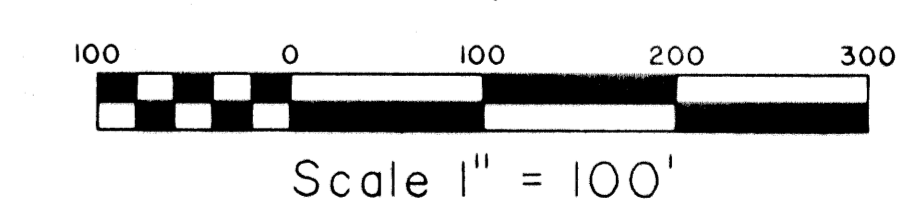
TEMPORARY 10' U.E.
 (O.R.B. 9354, PAGE 1737)
 ABANDONED BY
 O.R.B. 12062, PAGE 1821

TEMPORARY 10' U.E.
 (O.R.B. 9354, PAGE 1737)
 ABANDONED BY
 O.R.B. 12062, PAGE 1821

TEMPORARY 10' U.E.
 (O.R.B. 9354, PAGE 1737)
 ABANDONED BY
 O.R.B. 12062, PAGE 1821



DETAIL "A"
 (NOT TO SCALE)



Landmark Surveying & Mapping Inc.
 1850 Forest Hill Boulevard
 Ph. (561) 433-5405 Suite 100 W.P.B. Florida
 LB # 4396

**CORPORATE ROAD NORTH
 AND WALGREENS DRIVE**

*Corporate road north and Walgreens drive
 91 B
 83 508
 P.D.
 35418
 Corporate road north
 + Walgreens drive*